

COMPACT BELLOWS GAS METER

BK-G10M BK-G16M



Application

Medium: natural gas, town gas, propane, butane.

Branches: gas industry.

Task: measuring gas volume.

Operating principle

Four measuring chambers divided by synthetic membranes are alternating filled and emptied. A joint gear transmits the membrane movement onto a crank shaft. The crank shaft controls the gas flow by slides. The rotary motion of the gear is transmitted onto the index by a magnetic coupling.

Brief information

The gas meters BK-G10M and BK-G16M are compact bellows gas meters designed for the highest requirements concerning the measurement accuracy and safety. The innovative construction is based on the experience of many decades of years. The BK-G10M and BK-G16M are produced in a housing of overlap-connected steel sheet metal, in one- and two-bossed versions. The measuring mechanism of the BK-G10M and BK-G16M works with the principle of a free diaphragm. This results in small forces being exerted on the bearings as well as a quiet gas meter operation. The constructive solution based on the principle of a free diaphragm makes it possible to use a mechanical temperature correction (BK-G10MT and BK-G16MT) for a determined reference temperature. The proven and patented compact system as well as the materials applied guarantee a high quality level of these gas meters. Due to the small slides, the BK-G10M and BK-G16M gas meters are stable and unsusceptible to contamination. The measuring unit is done by a needle-and-scale system.

Main features

- high measurement accuracy and long metrological stability
- compact structure
- possibility to attach impulse transmitter (1 imp. = 0,1 m³)
- quiet operation
- max. working pressure 50 kPa – standard
- max. working pressure 10 kPa – high temperature version T₁ = 650°C
- working temperature from -25°C up to +40°C

Technical data

- Range counter: 999999,99 m³
- Color: RAL 7035
- Obudowa stalowa łączona na zakładkę

Optional:

- The pulse generator: 1 imp. = 0,1 m³
- Remote reading, module IMR: APULSE, OKO

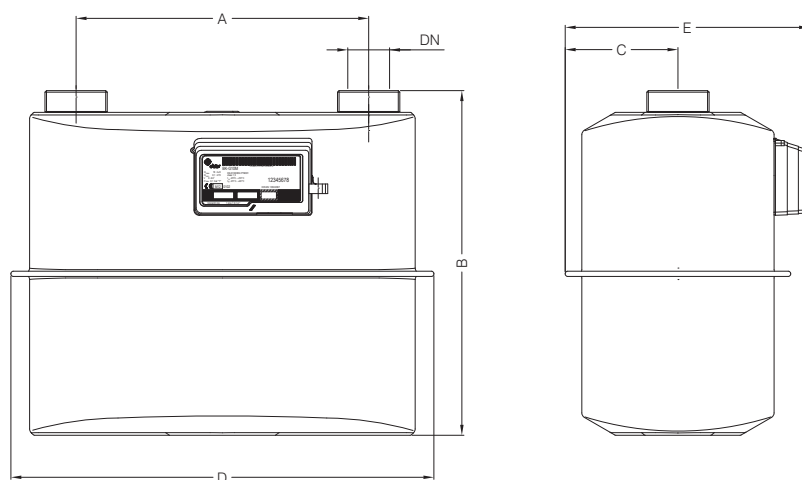
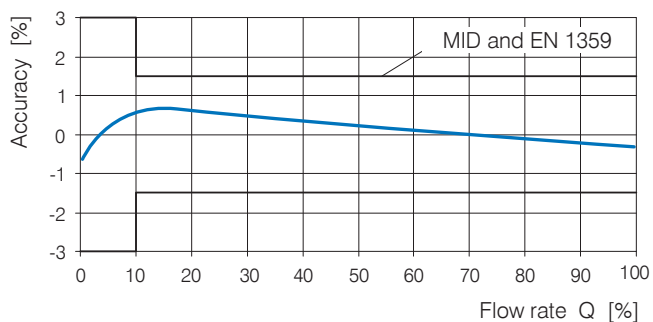


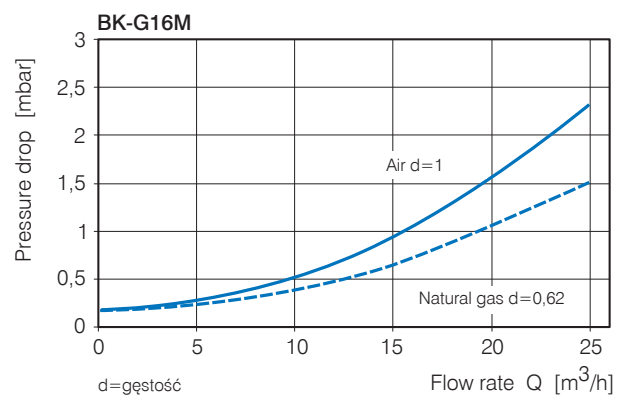
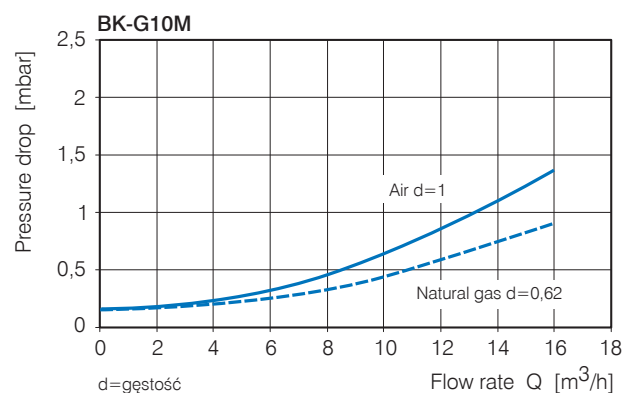
Fig.1

| Rys. | Typ | Q _{max} | Q _{min} | V | Przyłącze | | A | B | C | D | E | Waga |
|------|---------|-------------------|------------------|----|-----------|----|-----|-----|-----|-----|-----|------|
| | | m ³ /h | dm ³ | DN | Gwint | mm | | | | | | |
| 1 | BK-G10M | 16 | 0,1 | 6 | 40 | 2" | 280 | 330 | 108 | 405 | 234 | 5,7 |
| | BK-G16M | 25 | 0,16 | 6 | 40 | 2" | 280 | 330 | 108 | 405 | 234 | 5,7 |

Error curve



Pressure drop curve



Manufacturer:



Zakład Wytwórczy Urządzeń Gazowniczych „INTERGAZ” Sp. z o.o.

42-600 Tarnowskie Góry, ul. Nakielska 42/44
Tel.: +48 (32) 285 88 15, fax.: +48 (32) 285 24 65
intergaz@intergaz.eu, www.intergaz.eu

Provider:

